



JMJD2B Polyclonal Antibody

Catalog No	YP-Ab-01835
Isotype	IgG
Reactivity	Human;Rat;Mouse;
Applications	IHC;IF;ELISA
Gene Name	KDM4B
Protein Name	Lysine-specific demethylase 4B
Immunogen	The antiserum was produced against synthesized peptide derived from human KDM4B. AA range:351-400
Specificity	JMJD2B Polyclonal Antibody detects endogenous levels of JMJD2B protein.
Formulation	Liquid in PBS containing 50% glycerol, 0.5% BSA and 0.02% sodium azide.
Source	Polyclonal, Rabbit,IgG
Purification	The antibody was affinity-purified from rabbit antiserum by affinity-chromatography using epitope-specific immunogen.
Dilution	IHC: 1/100 - 1/300. ELISA: 1/5000.. IF 1:50-200
Concentration	1 mg/ml
Purity	≥90%
Storage Stability	-20°C/1 year
Synonyms	KDM4B; JHDM3B; JMJD2B; KIAA0876; Lysine-specific demethylase 4B; JmjC domain-containing histone demethylation protein 3B; Jumonji domain-containing protein 2B
Observed Band	
Cell Pathway	Nucleus .
Tissue Specificity	Brain,Epithelium,Testis,
Function	cofactor: Binds 1 Fe(2+) ion per subunit.,domain: The 2 Tudor domains recognize and bind methylated histones. Double Tudor domain has an interdigitated structure and the unusual fold is required for its ability to bind methylated histone tails.,function: Histone demethylase that specifically demethylates 'Lys-9' of histone H3, thereby playing a role in histone code. Does not demethylate histone H3 'Lys-4', H3 'Lys-27', H3 'Lys-36' nor H4 'Lys-20'. Only able to demethylate trimethylated H3 'Lys-9', with a weaker activity than KDM4A, KDM4C and KDM4D. Demethylation of Lys residue generates formaldehyde and succinate.,similarity: Belongs to the JHDM3 histone demethylase family.,similarity: Contains 1 JmjC domain.,similarity: Contains 1 JmjN domain.,similarity: Contains 2 PHD-type zinc fingers.,similarity: Contains 2 Tudor domains.,



Background

cofactor: Binds 1 Fe(2+) ion per subunit., domain: The 2 Tudor domains recognize and bind methylated histones. Double Tudor domain has an interdigitated structure and the unusual fold is required for its ability to bind methylated histone tails., function: Histone demethylase that specifically demethylates 'Lys-9' of histone H3, thereby playing a role in histone code. Does not demethylate histone H3 'Lys-4', H3 'Lys-27', H3 'Lys-36' nor H4 'Lys-20'. Only able to demethylate trimethylated H3 'Lys-9', with a weaker activity than KDM4A, KDM4C and KDM4D. Demethylation of Lys residue generates formaldehyde and succinate., similarity: Belongs to the JHDM3 histone demethylase family., similarity: Contains 1 JmjC domain., similarity: Contains 1 JmjN domain., similarity: Contains 2 PHD-type zinc fingers., similarity: Contains 2 Tudor domains.,

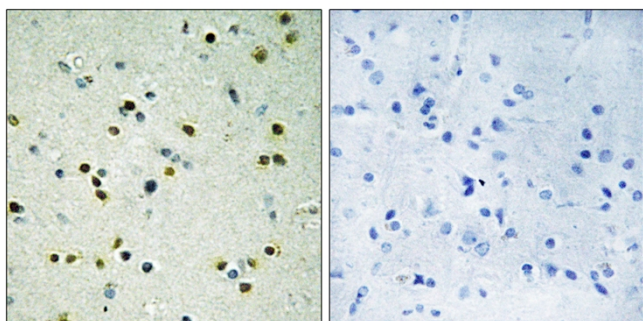
matters needing attention

Avoid repeated freezing and thawing!

Usage suggestions

This product can be used in immunological reaction related experiments. For more information, please consult technical personnel.

Products Images



Immunohistochemistry analysis of paraffin-embedded human brain, using JHD3B Antibody. The picture on the right is blocked with the synthesized peptide.